

EMERGENCY FIRE PLAN

(Updated 09/02/2014)

Report any fires to “000” alternatively from a GSM mobile “112”

Telephone neighbors and inform of situation – see “Emergency Contact List”

Knockalong



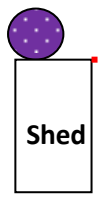
Update Stock management procedures – Relative to the wind direction and climatic conditions, plan for the safety of the stock, gates to open, stock to move. Also domestic animals, horses & working dogs.

Discuss “Fight” or “Flight” alternatives, evacuation, imminent road closures, possible “safe” houses or “safe” zones. Remember the environment of a fire will dramatically impair visibility with smoke affect breathing and vision.

- **Secure valuable documentation, evacuation or locked in fire-proof safe**
- **Open gates to allow access around residents & buildings**
- **Prepare water bottles and Personal Protective Equipment**
- **Local and district maps on hand**
- **Check around house & buildings for ember igniters (outdoor table cloths, hammock, (oily) rags in the shed.**
- **Place buckets at the ready (beside ponds etc)**
- **Refuel vehicles – fire truck, escape vehicles**
- **Move vehicles/trailers to bare ground**
- **Keys accessible – placed in the vehicle ignition**
- **Double check fuel for generators & pumps, reserve fuel on hand**
- **Plan safe “accommodation” for the work animals (dogs & horses)**
- **Evaluate emergency water sources, check quick access to tanks for suction hoses (remove leaf strainer retaining screws)**
- **Management of communication, manning a base station, choice of radio frequencies, hand-held radio distribution (Channel 15 local then Channel 20 as the emergency default)**
- **Place fire trailer at appropriate building & water source**
- **Set up Garden hoses at ready, 3/4” hoses connected 1) North & 2) South with nozzles)**
- **Woolshed hoses ready and pressure pump switched “ON”**
- **Ladders at hand**
- **Power failure - House Generator to be started**
- **Organize manning of firefighting equipment (truck driver, hose operator etc).**

Plan – Fire preparations

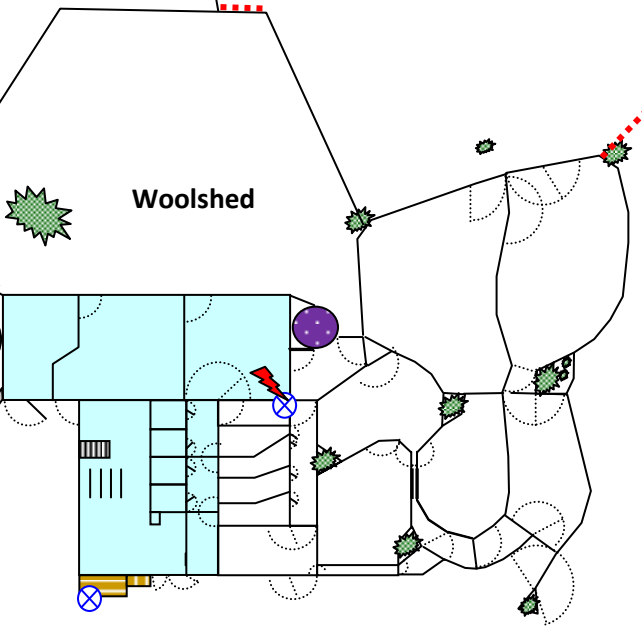
- Gates to OPEN
- ⊗ Hoses at the ready
- ⚡ Pressure pump ON
- Emergency water source



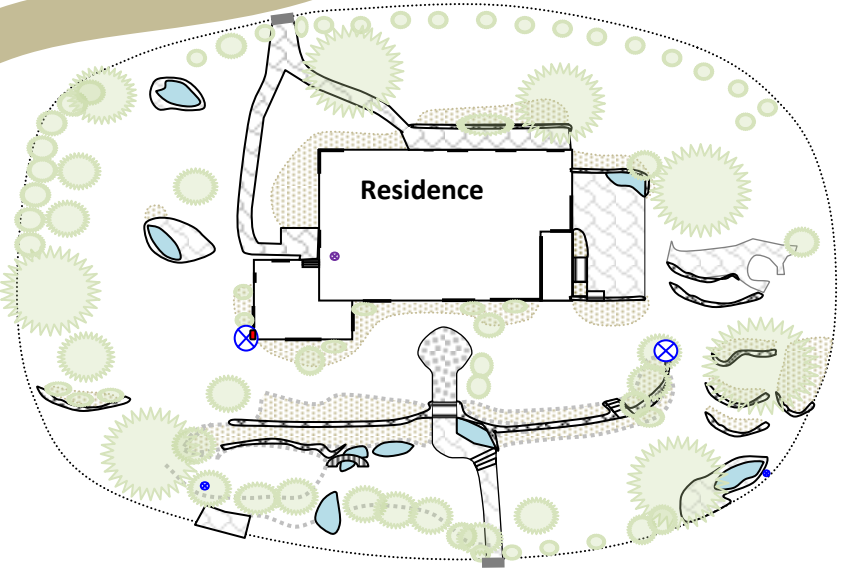
Shed



Shed



Woolshed



Residence

